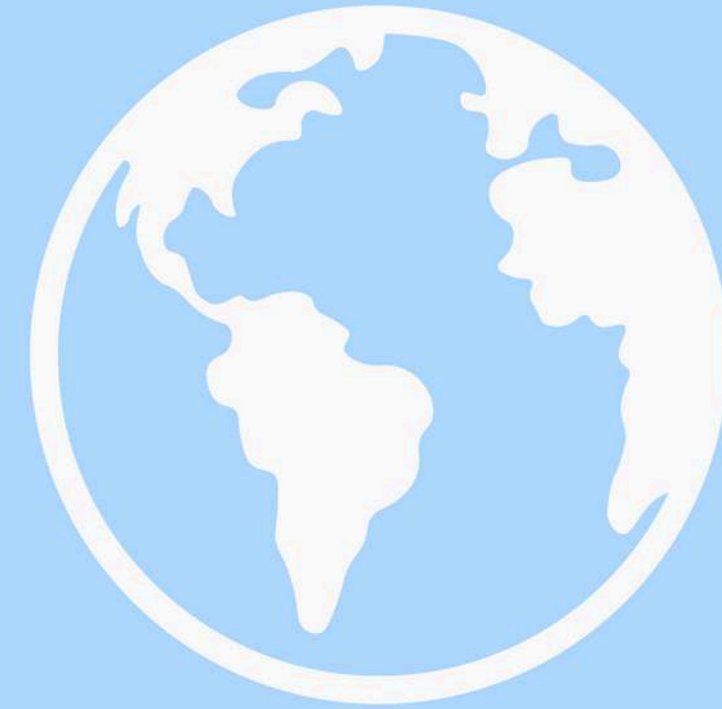
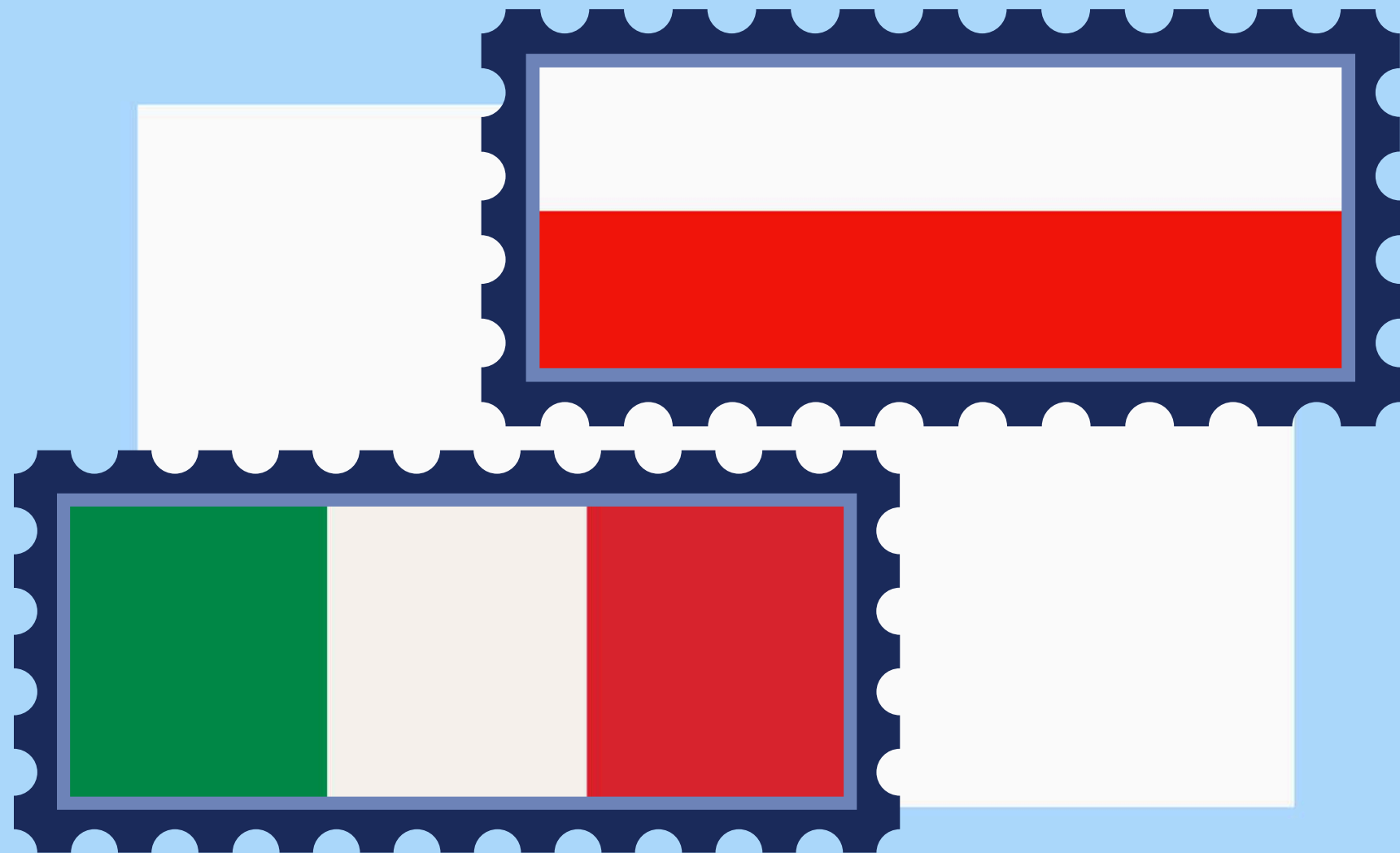


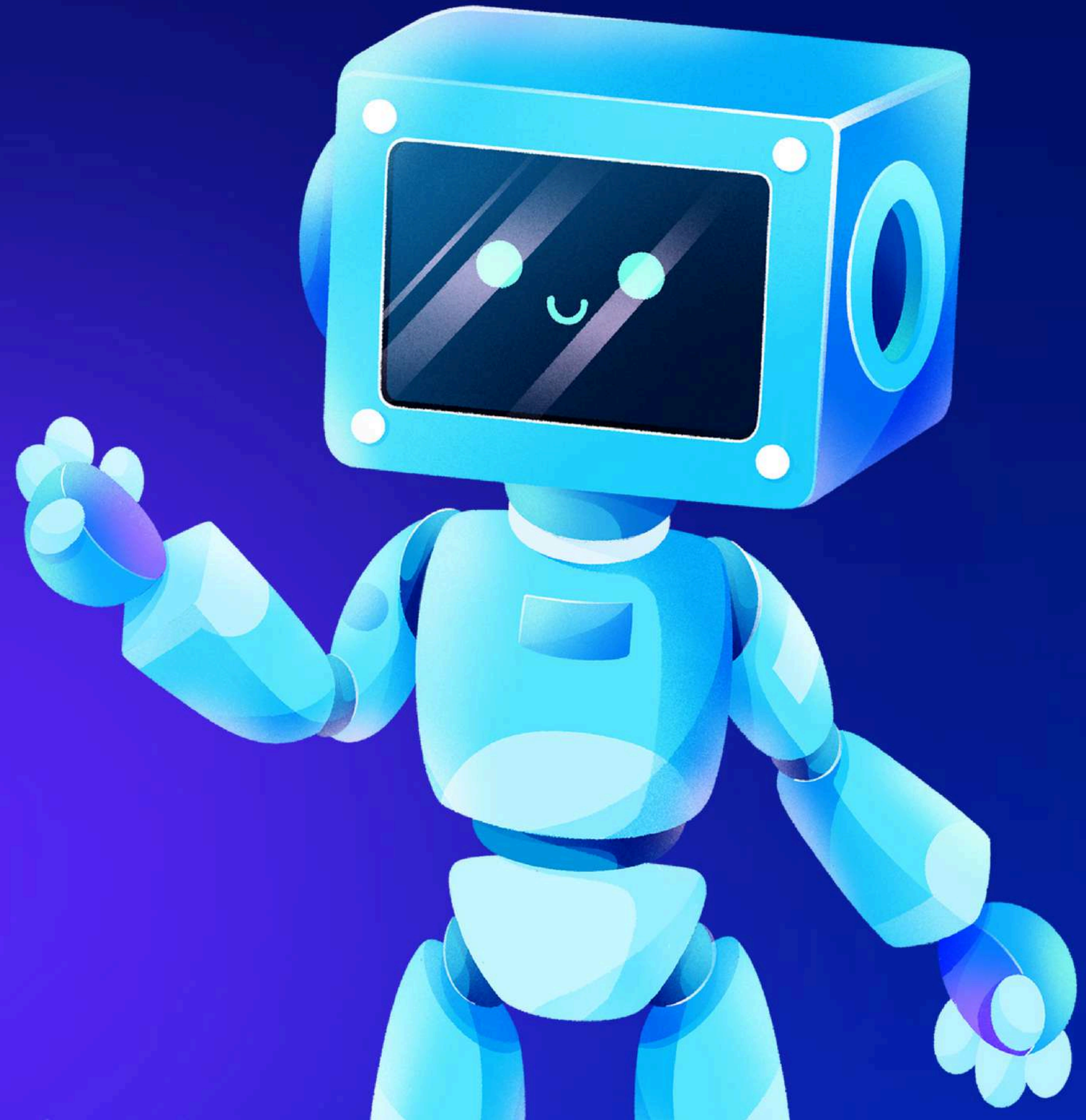
Contemporary social challenge

in **P**oland and **I**taly



**Bartosz Kluza, Piotr Polega, Gabriel
Gajda**

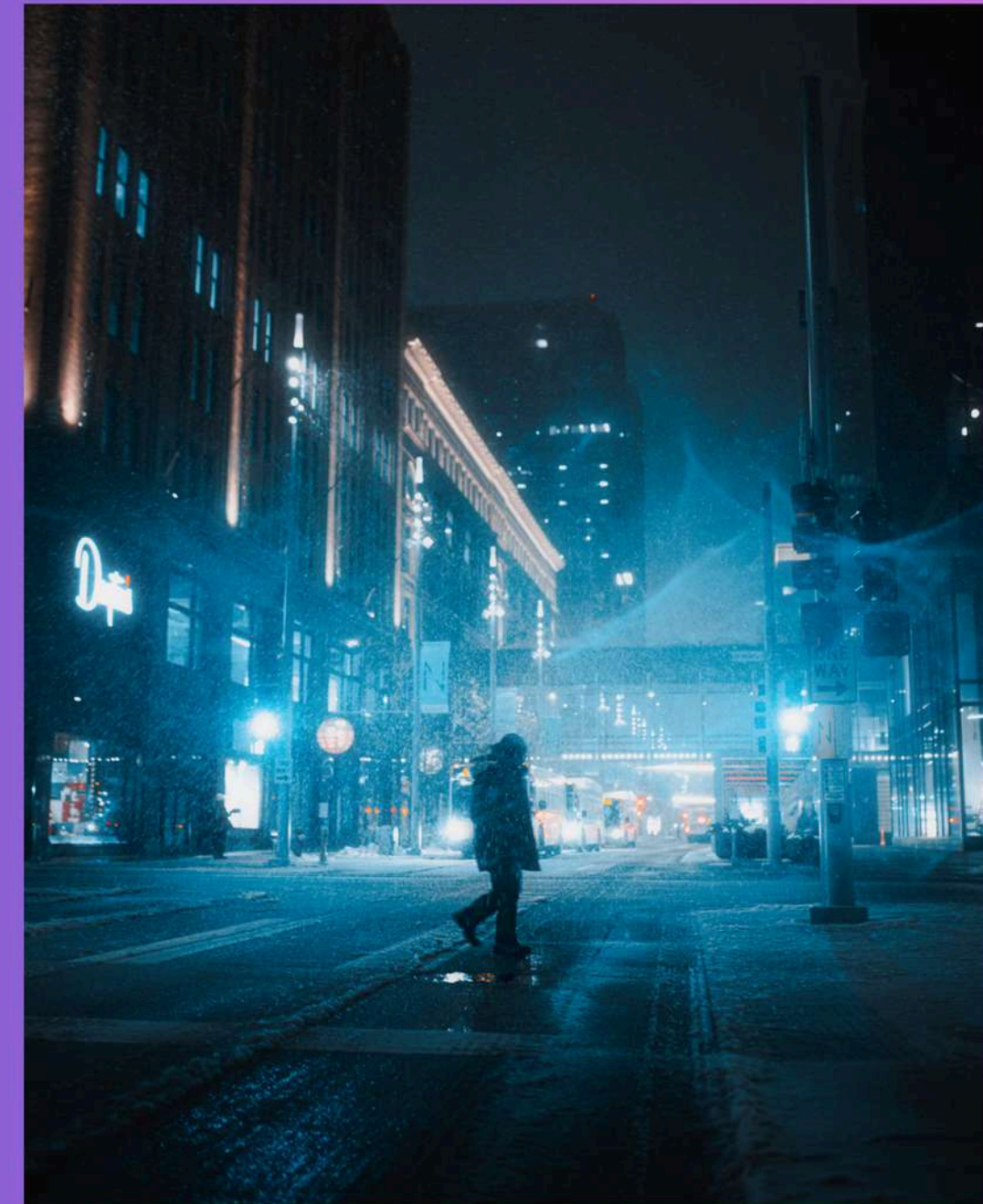
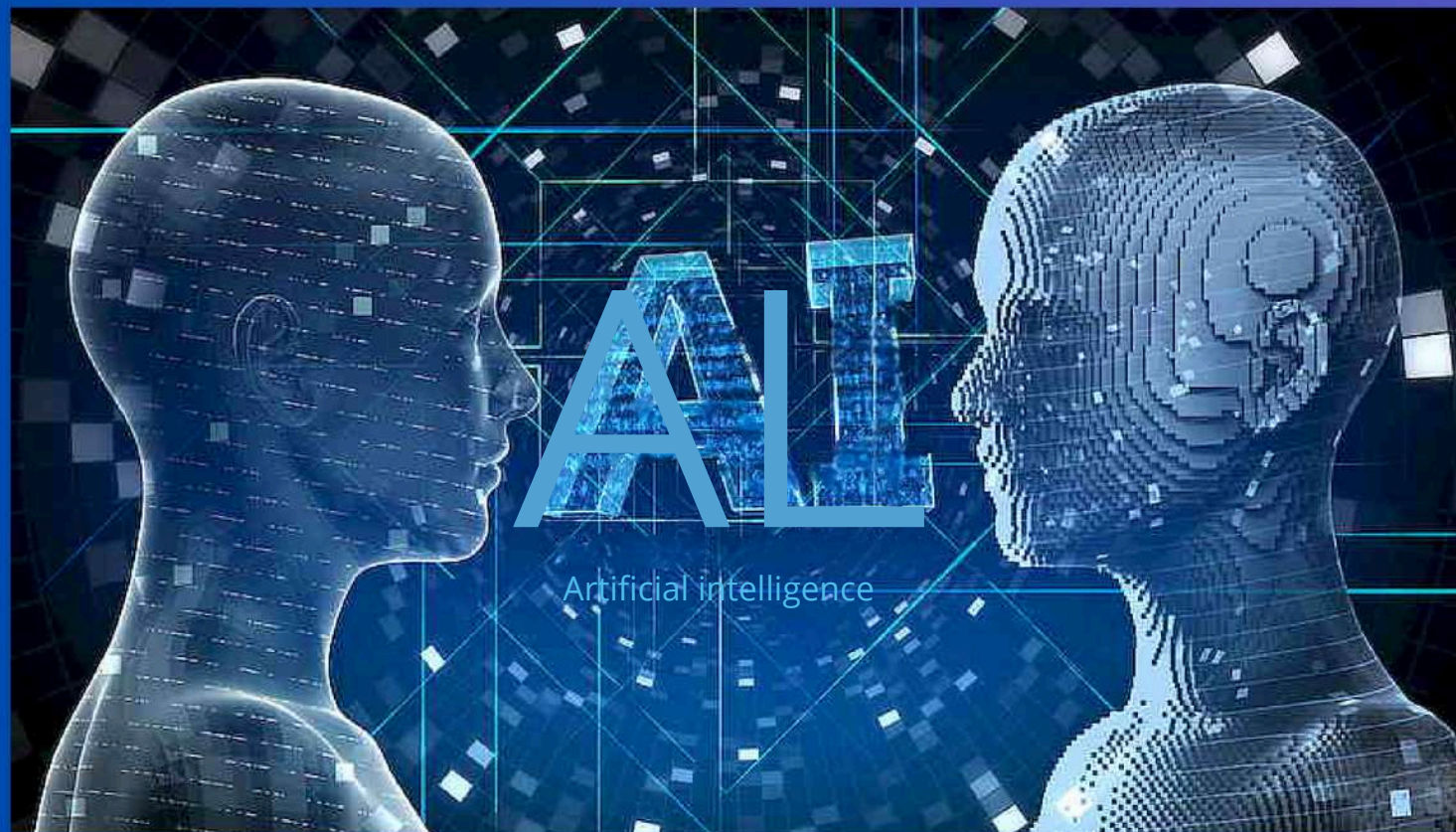
ARTIFICIAL
INTELLIGENCE



Artificial Intelligence

Threats
in Poland and Italy:

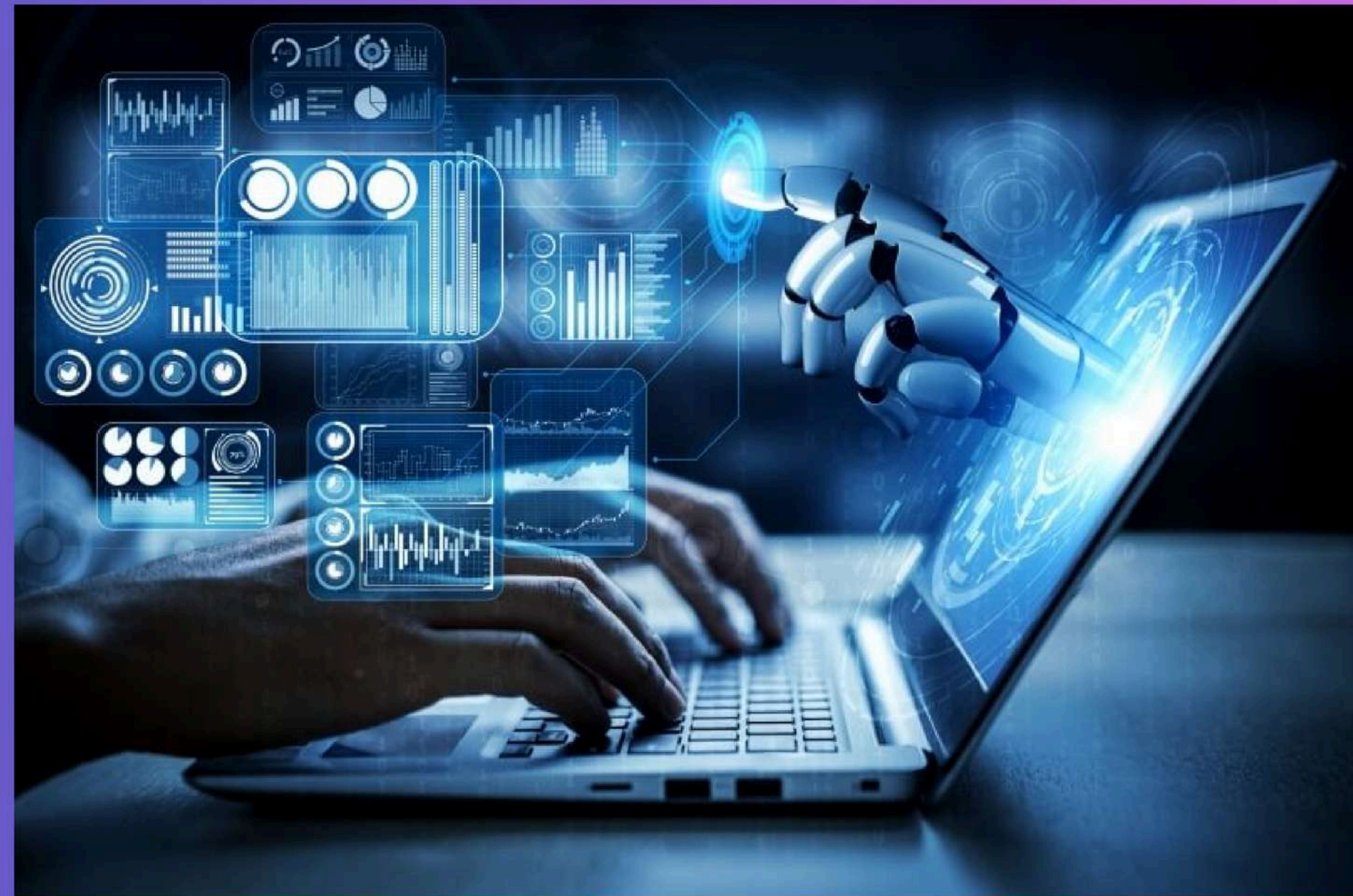
- Internet fraud
- "Stealing work places"
- Copyright



Data Privacy and Cybersecurity

In Italy and Poland

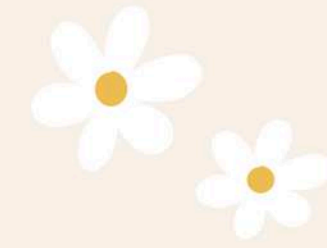
Cybersecurity is the protection of computer systems and networks against cyberattacks. The privacy of personal data is protected by European Union law. In order for someone to process personal data, the person's consent is required.



CLIMATE CHANGE



Poland and Italy



Climate Change in Poland

Currently, with an average global temperature increase of 1.2°C, the temperature increase in our country exceeds 2°C.

In the high emissions scenario, with global warming by 2100 by approximately 4°C, the temperature increase in Poland will amount to approximately 6°C



Climate Change in Italy

A changing climate could have devastating effects on Italy's coastal settlements, infrastructure and ecosystems. Rising sea levels, coastal erosion and changing storm patterns could see 0.48 million people exposed to devastating floods by 2050, if it follows a high carbon pathway



MIGRATION AND DISPLACEMENT IN POLAND



Migration and Displacement in Poland

Although there are almost no Internally Displaced Persons in Poland, there are a few thousand refugees and asylum seekers.

The most vulnerable fall prey to human trafficking such as forced labour and forced sexual commercial exploitation.



Migration and Displacement in Italy

Migration and displacement in Italy have been significant issues in recent years due to factors like economic opportunities, conflict, and climate change. Italy has experienced both internal migration from rural to urban areas and international migration from countries in Africa, the Middle East, and Eastern Europe.

Displacement within Italy is often driven by economic disparities between the north and south, while international migration is often related to asylum seekers and refugees. The government and various organizations have been working to address these challenges





THANK YOU
for your attention

"The project is financed by the European Union. The opinions and views expressed are solely the personal views of the authors and do not necessarily reflect the position of the European Union or the entity granting support. The European Union and the grantor are not responsible for them."